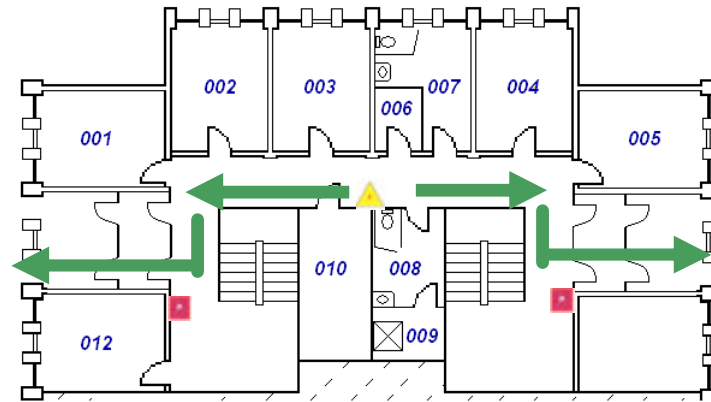


Armstrong Hall

Basement Floor

Emergency Evacuation Assembly Point is the Fitten/Fulmer parking lot



FIRE EXTINGUISHER



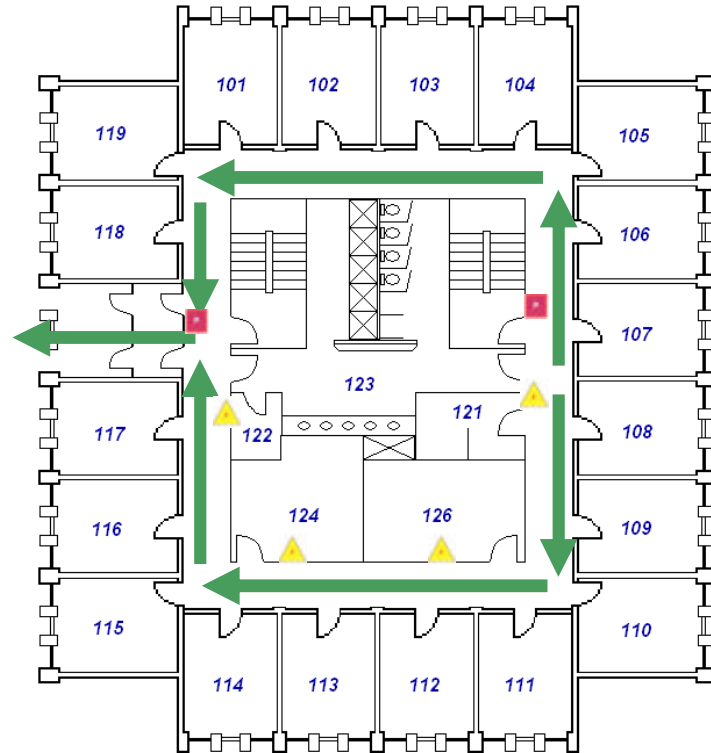
FIRE PULL BOX

For emergency access contact the duty staff pager at 404-533-7197 or the Campus police at 404-894-2500.

Armstrong Hall

First Floor

Emergency Evacuation Assembly Point is the Fitten/Fulmer parking lot



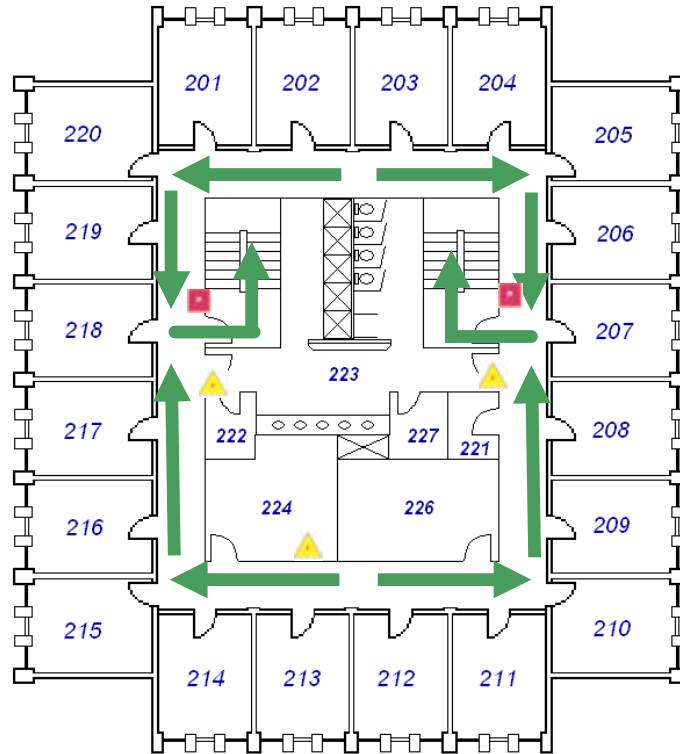
FIRE EXTINGUISHER FIRE PULL BOX

For emergency access contact the duty staff pager at 404-533-7197 or the Campus police at 404-894-2500.

Armstrong Hall

Second Floor

Emergency Evacuation Assembly Point is the Fitten/Fulmer parking lot



FIRE EXTINGUISHER



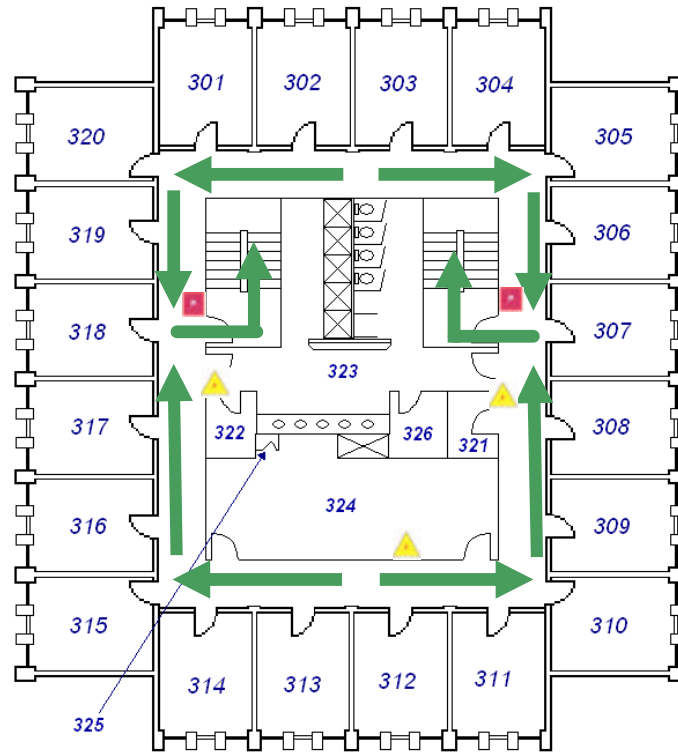
FIRE PULL BOX

For emergency access contact the duty staff pager at 404-533-7197 or the Campus police at 404-894-2500.

Armstrong Hall

Third Floor

Emergency Evacuation Assembly Point is the Fitten/Fulmer parking lot



FIRE EXTINGUISHER



FIRE PULL BOX

For emergency access contact the duty staff pager at 404-533-7197 or the Campus police at 404-894-2500.