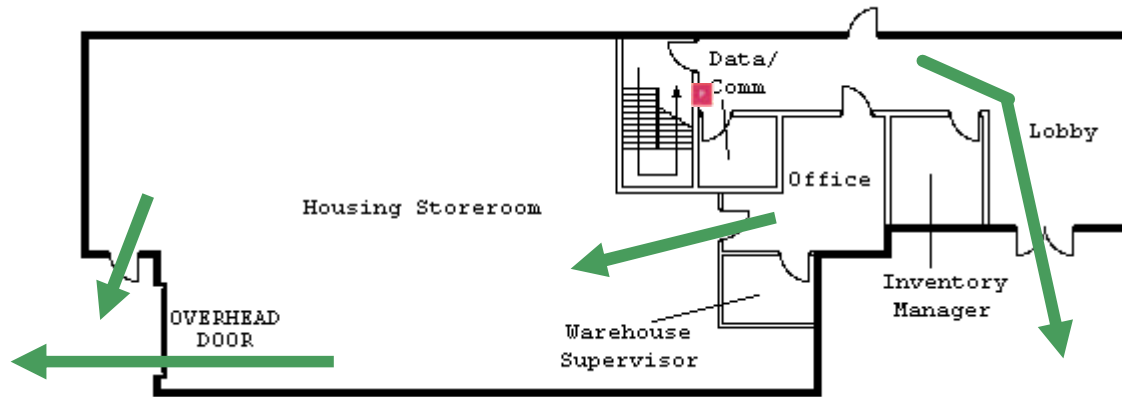


# Freeman Hall

## Basement Floor

Emergency Evacuation Assembly Point is across McMillan St. by Sixth St. Apts.



FIRE EXTINGUISHER



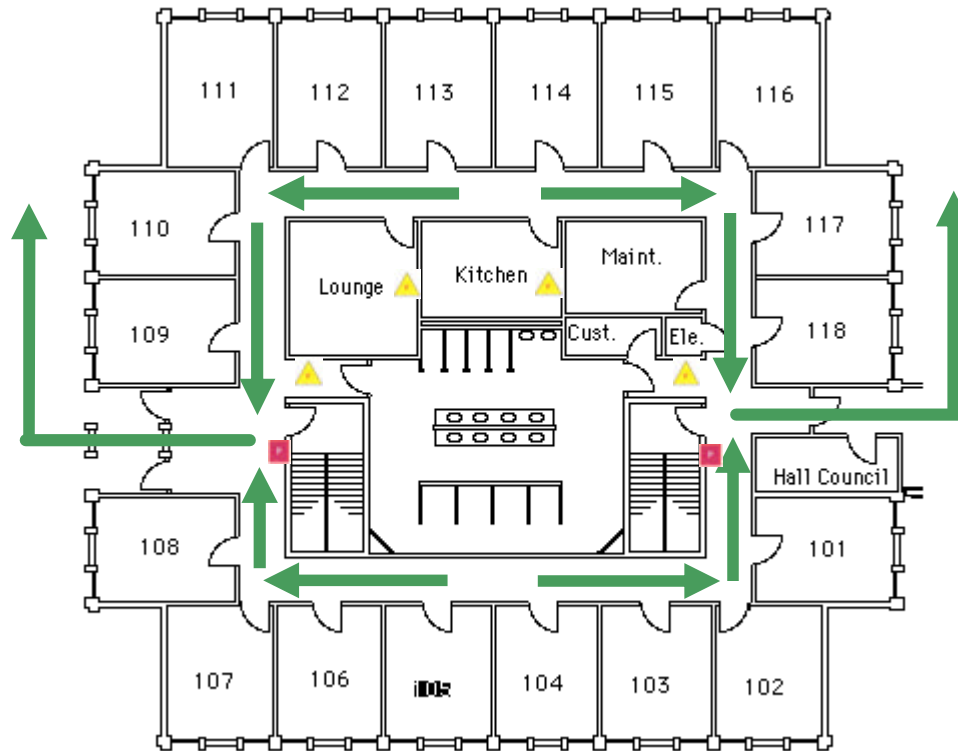
FIRE PULL BOX

For emergency access contact the duty staff pager at 404-533-7197 or the Campus police at 404-894-2500.

# Freeman Hall

## First Floor

Emergency Evacuation Assembly Point is across McMillan St. by Sixth St. Apts.



FIRE EXTINGUISHER



FIRE PULL BOX

For emergency access contact the duty staff pager at 404-533-7197 or the Campus police at 404-894-2500.

# Freeman Hall

## Second Floor

Emergency Evacuation Assembly Point is across McMillan St. by Sixth St. Apts.



FIRE EXTINGUISHER



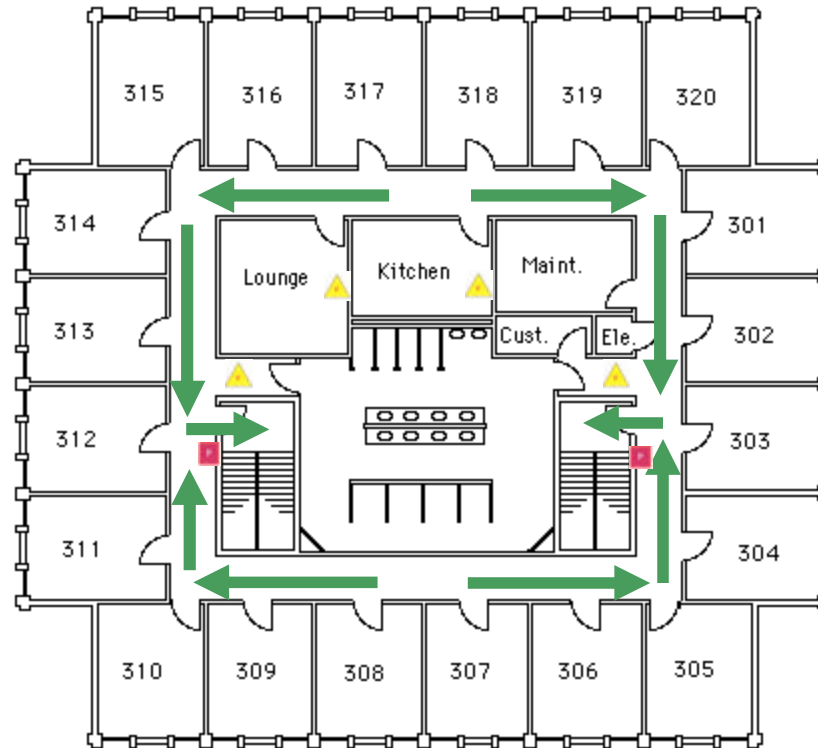
FIRE PULL BOX

For emergency access contact the duty staff pager at 404-533-7197 or the Campus police at 404-894-2500.

# Freeman Hall

## Third Floor

Emergency Evacuation Assembly Point is across McMillan St. by Sixth St. Apts.



FIRE EXTINGUISHER



FIRE PULL BOX

For emergency access contact the duty staff pager at 404-533-7197 or the Campus police at 404-894-2500.