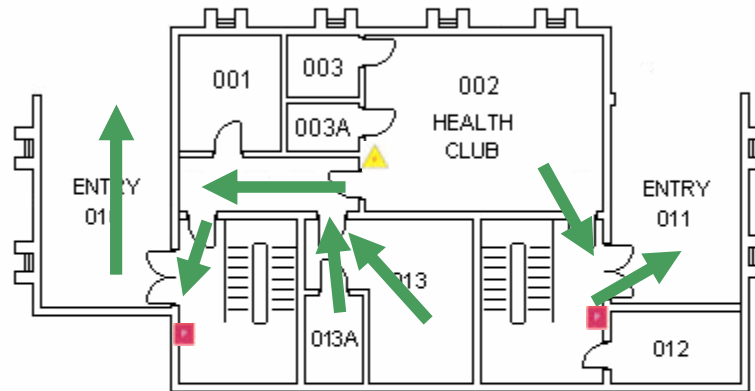


Folk Hall

Basement Floor

Emergency Evacuation Assembly Point is across
Turner Place by the Couch Building



FIRE EXTINGUISHER



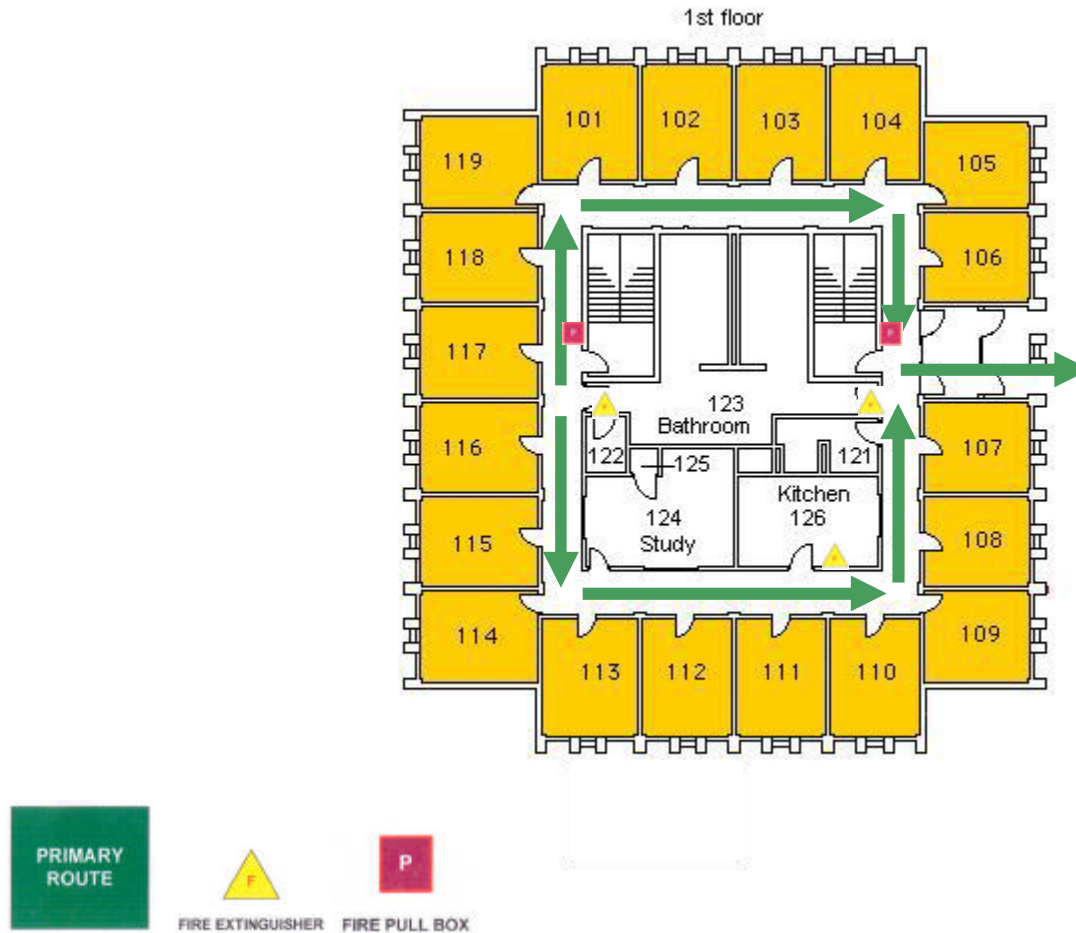
FIRE PULL BOX

For emergency access contact the duty staff pager at
404-533-7197 or the Campus police at 404-894-2500.

Folk Hall

First Floor

Emergency Evacuation Assembly Point is across Turner Place by the Couch Building

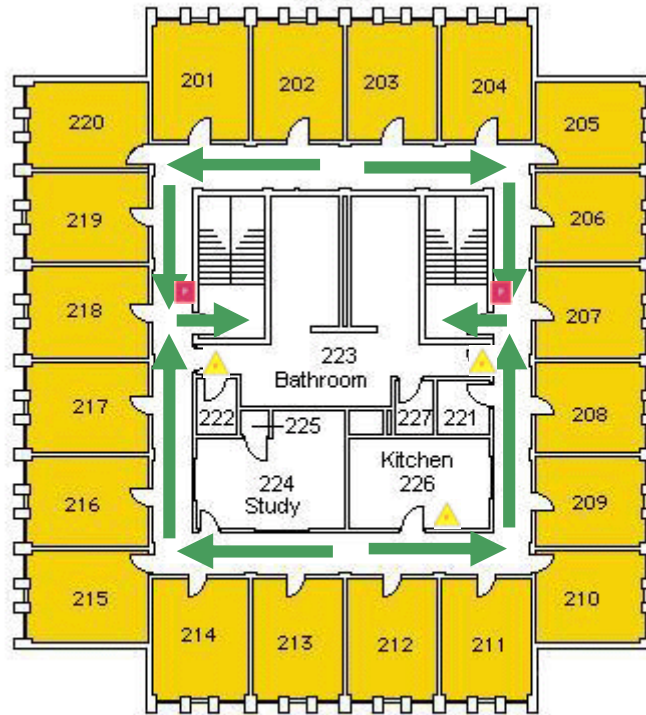


For emergency access contact the duty staff pager at 404-533-7197 or the Campus police at 404-894-2500.

Folk Hall

Second Floor

Emergency Evacuation Assembly Point is across
Turner Place by the Couch Building



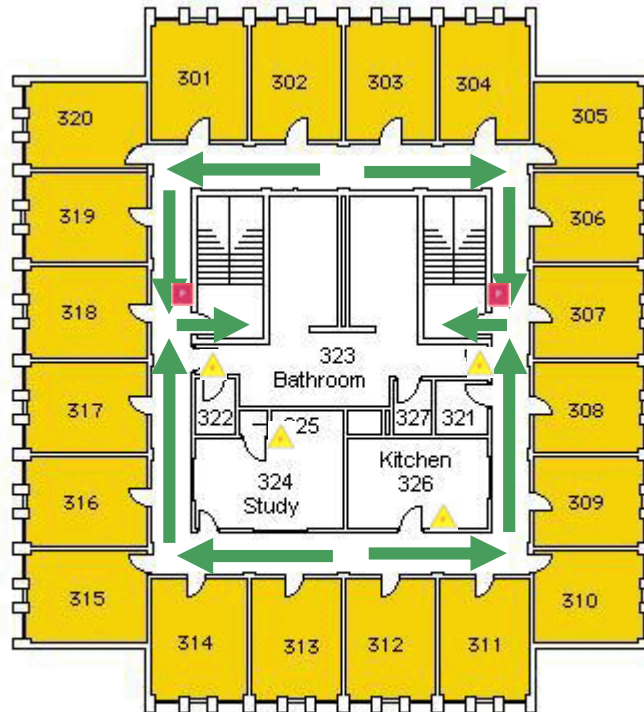
FIRE EXTINGUISHER FIRE PULL BOX

For emergency access contact the duty staff pager at
404-533-7197 or the Campus police at 404-894-2500.

Folk Hall

Third Floor

Emergency Evacuation Assembly Point is across
Turner Place by the Couch Building



FIRE EXTINGUISHER



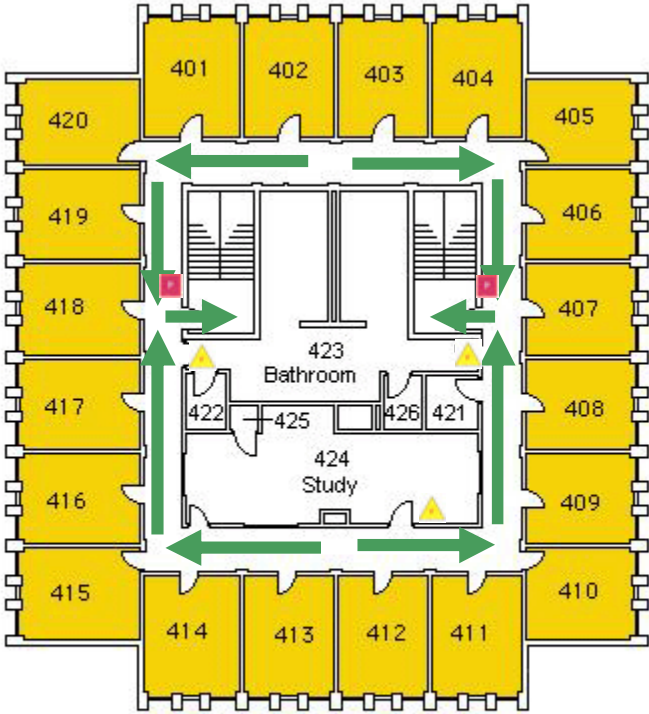
FIRE PULL BOX

For emergency access contact the duty staff pager at
404-533-7197 or the Campus police at 404-894-2500.

Folk Hall

Fourth Floor

Emergency Evacuation Assembly Point is across Turner Place by the Couch Building



For emergency access contact the duty staff pager at 404-533-7197 or the Campus police at 404-894-2500.